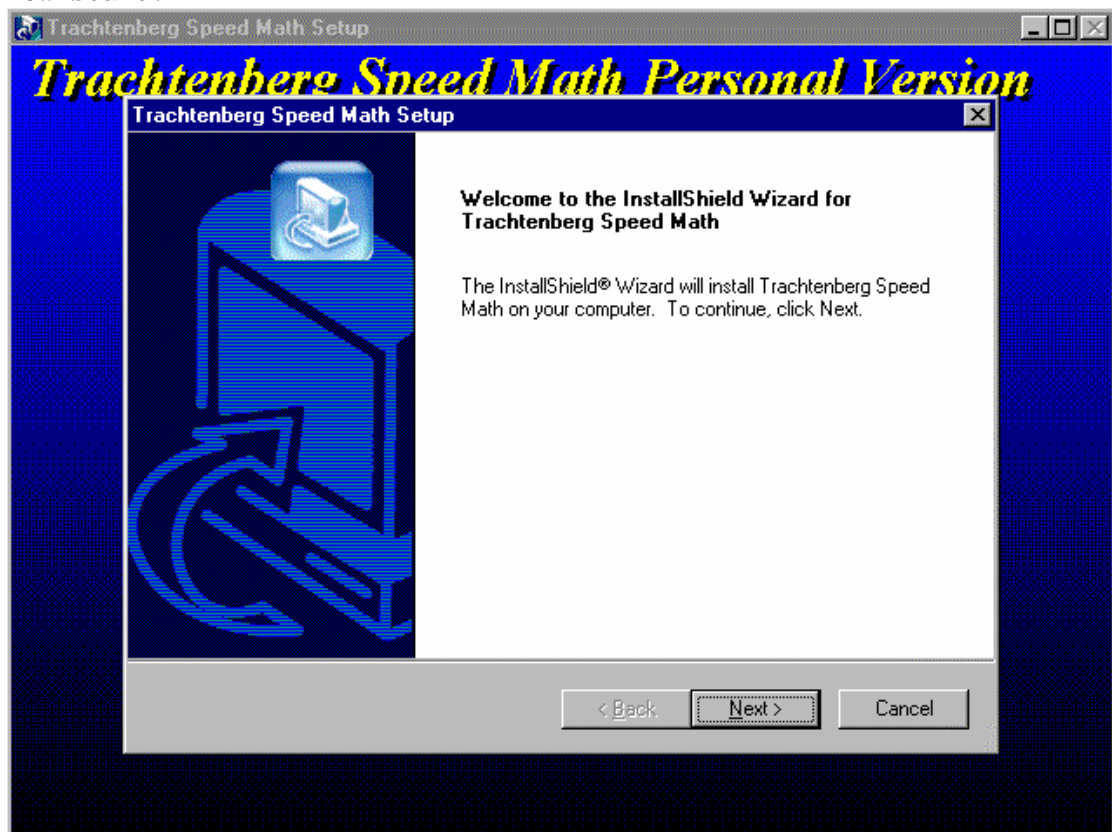


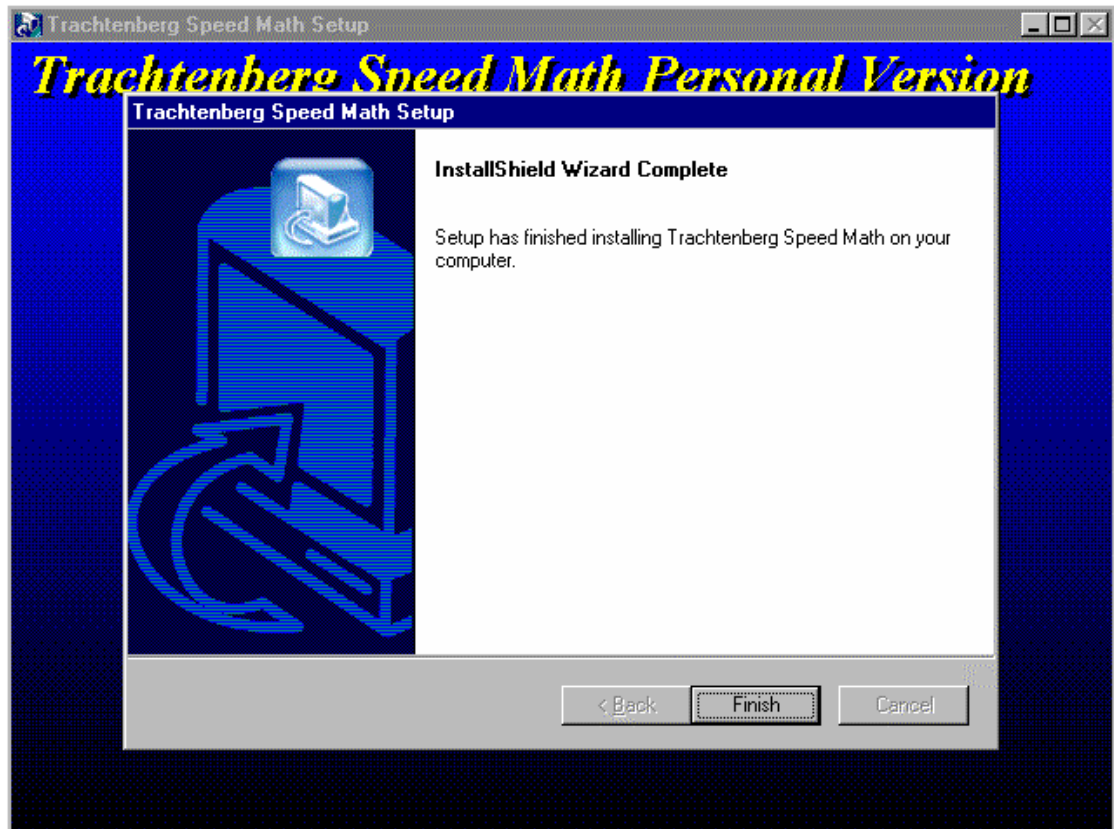
HOWTO Installation :: Trachtenberg Speed Math (TSM)

=====

- You would have received a username and password from us.
- Surf to www.speed-math.com Download page. There, click to download Trachtenberg Speed Math Personal version.
- The website will prompt you to enter your username and password. Enter the username and password as we provided you, and click OK. The download will start.
- When the download is over, it's time to install the program.
- Double-click on the downloaded file (TrachtenbergSpeedMathPersonal.exe). The installation process will now start.



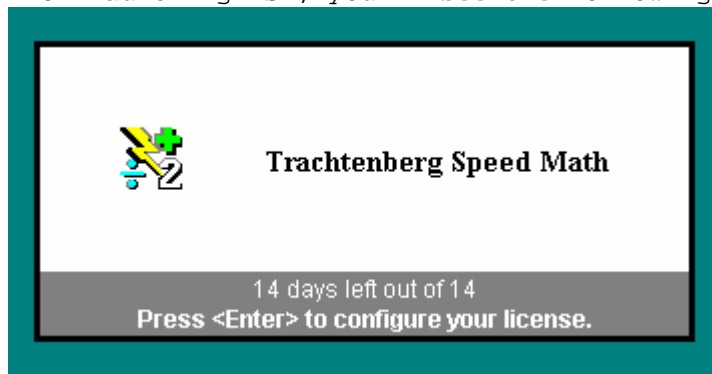
- Go through the installation screens. Just pressing the <Enter> key will do the job, until you finish the last install screen as shown below:



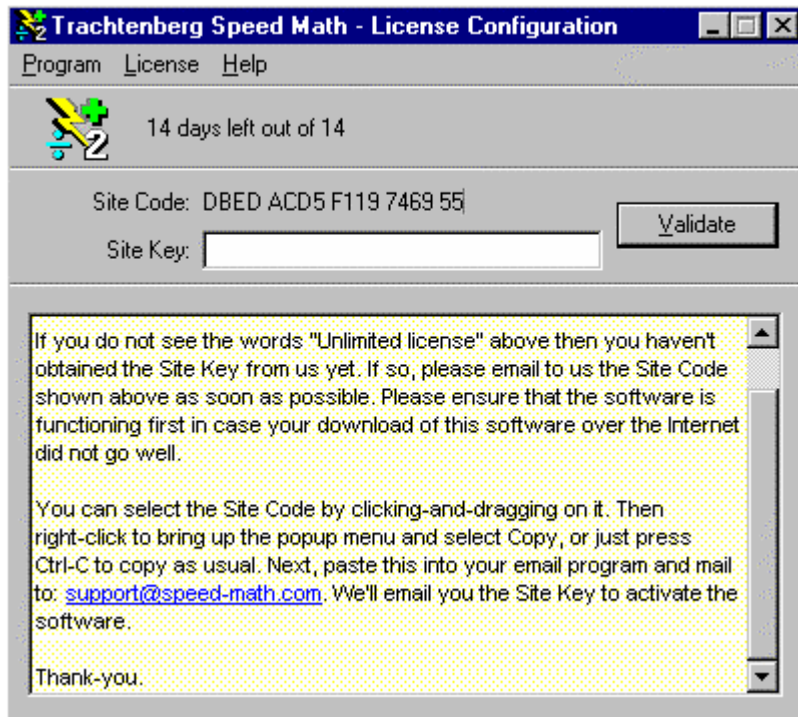
- On finishing the installation, the Readme.txt file automatically opens for you to read. (see pic below)
- A Trachtenberg Speed Math icon also appears on your desktop, for you to double-click to start TSM. (see pic below)
- You will also find that the installer has installed a menu on your Start menu. You can install TSM by selecting the menu item as shown below.



- On launching TSM, you'll see the following:

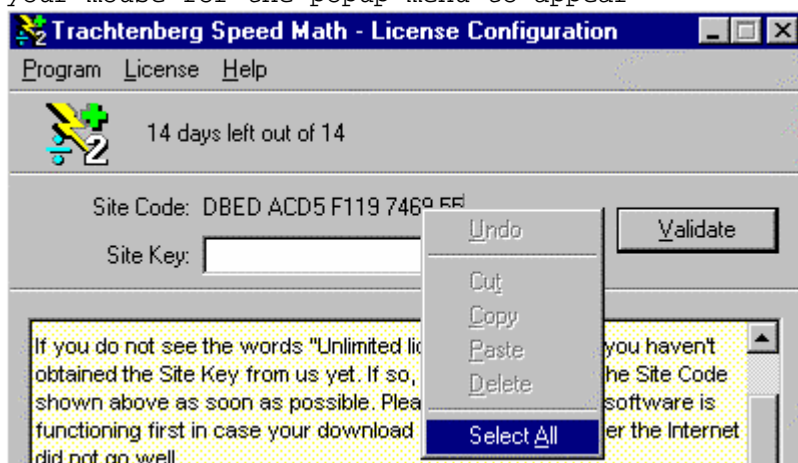


- Press <Enter> key as soon as you see it, so that you can configure your license. The following appears:



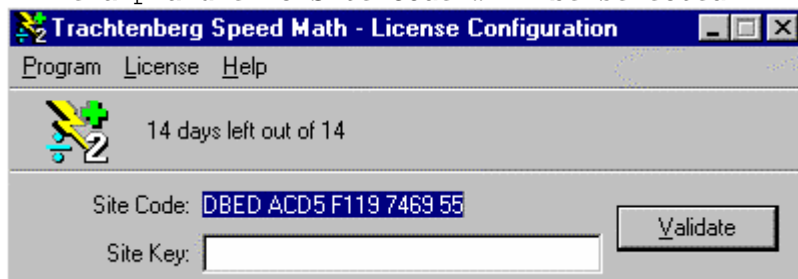
Look at "Site Code:". See the alphanumeric characters next to it? That's your site code. You need to email those characters to us so that we can provide you a serial number to enter into the Site Key white box.

- Place your mouse over the alphanumeric characters, and right-click your mouse for the popup menu to appear:

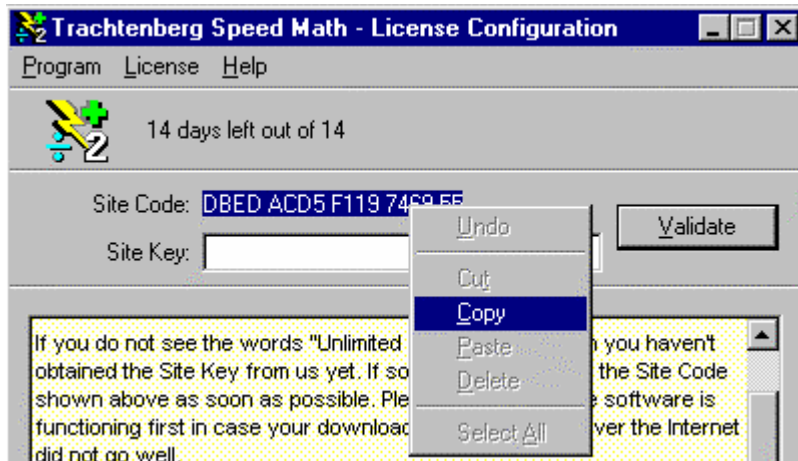


Choose the <Select All> menu item.

- The alphanumeric Site Code will be selected



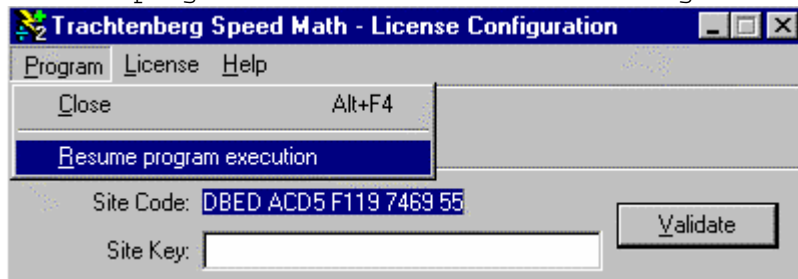
- Place your mouse over the highlighted selection and right-click your mouse to bring up the popup menu:



Choose <Copy> menu item to copy the Site Code.

- Open up your email program and paste it into an email. Send the email to us at support@speed-math.com

- To continue using TSM, click on the <Program> menu item and choose <Resume program execution> to start running TSM.



- We will send you the Site Key for you to enter into the <Site Key> field, for you to unlock TSM (this will overcome the 14 day limit as shown in the TSM launch screen. See one of the graphics above.)

We welcome any feedback from you on this installation document. Thank you.